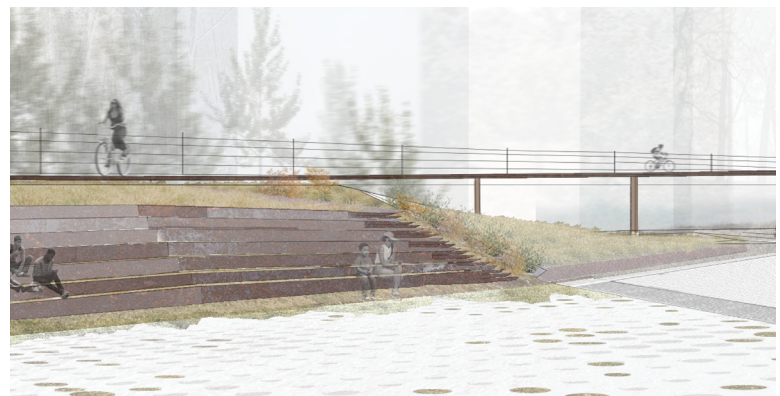
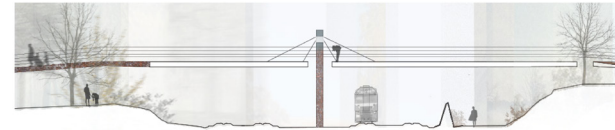




A Post Industrial Palimpsest

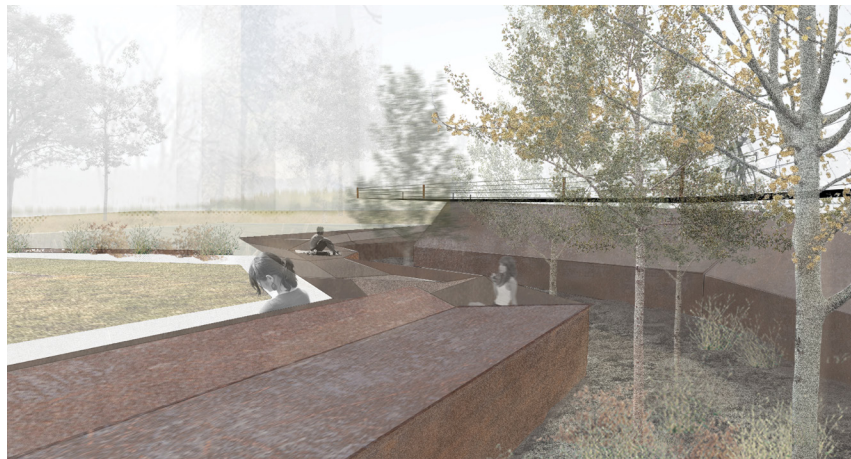
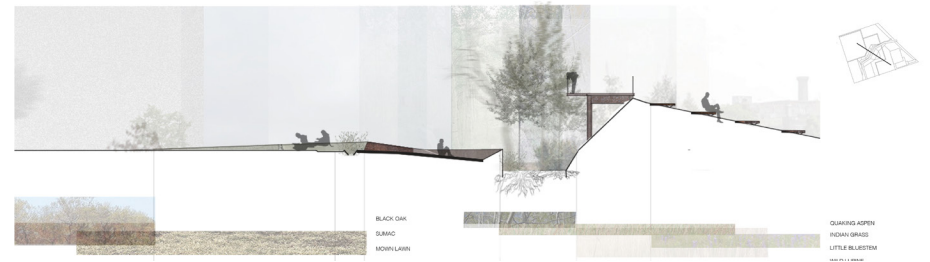
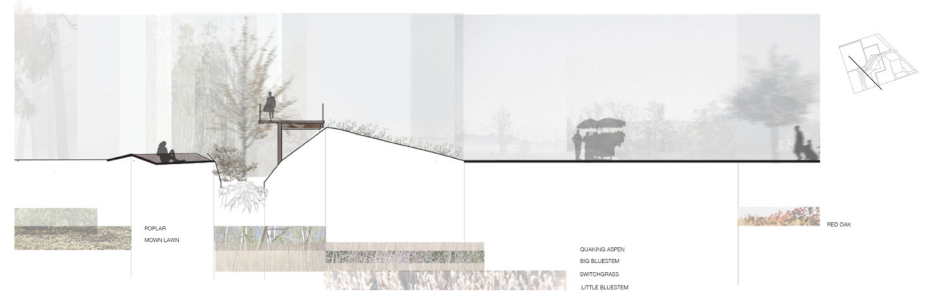
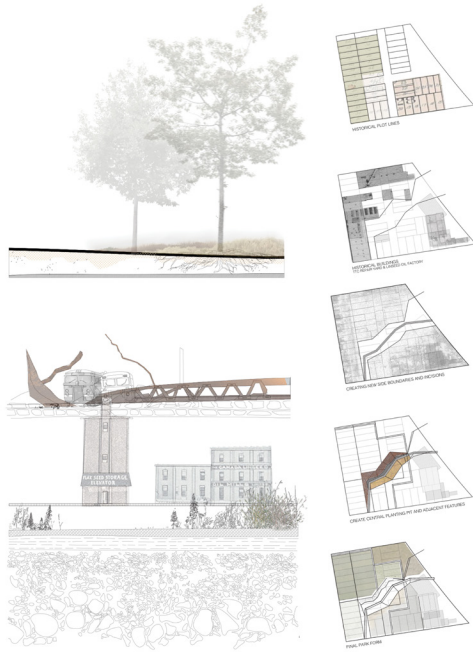
Ariel Clipperton

The revitalization of Toronto's Sorauren Avenue Park embraces its layered history from its natural state as a black oak savanna to its years as a TTC repair shop and linseed oil factory. The treatment of the site is an accretive process, as the redesign physically cuts through the clay cap that currently locks the site's history that lays beneath, allowing it to grow from within over time. The site plan was generated through an exercise of layering historical maps which revealed the location of the future remediation site which would occur along a linear incision through the park. The landscaping of the brownfield site reintroduces native species alongside the planting of phytoremediative technologies that naturally treat the contaminants. Materially, the park expresses its industrial past with a bike path that extends its arms to a larger network of green spaces within the city, creating a crossing over the railway that connects to the Toronto West Railpath. The reimagination of the Toronto City Park is an evolving and growing organism that preserves a previously buried history while embracing the opportunity to grow as an extension to a network of green spaces scattered through the city.



In an effort to marry the varied histories of the site, the material selection and planting palette are designed in conjunction with each other. The material expression of the past is a tactile experience as the metal bridge transforms into seating or planting boxes. The vegetative palette plays an active role in informing the past, either revealing its natural history or identifying contaminated areas of the site such as the central location of the phytoremediation pit.

The park is about movement; the bike path seems intrusive as it cuts through the park but it plays an important role in separating softscape and hardscape as it choreographs movement around the park and through the city, simultaneously creating structure for the central features of the park.

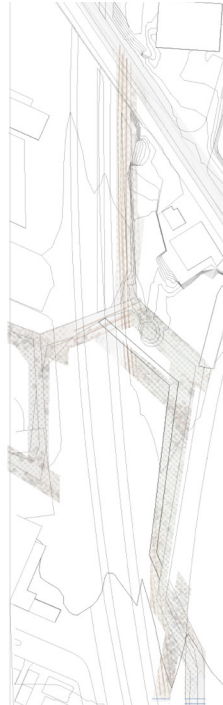




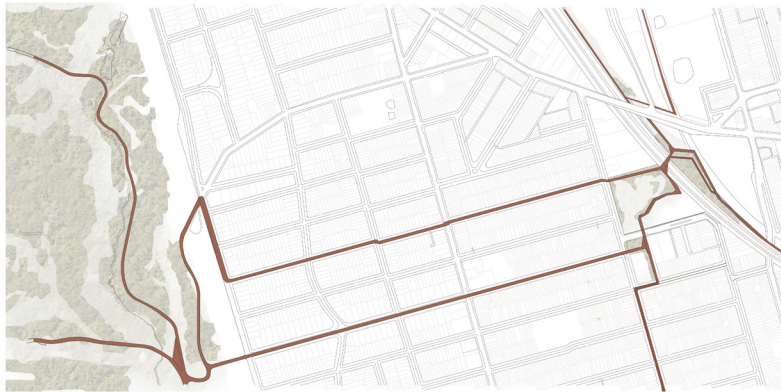
MOVEMENT LINKING POINTS OF CONNECTION



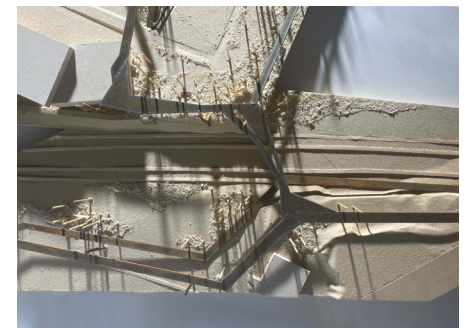
ECOLOGICAL FLOWS



Form generation for crossing



RECONNECTING SORAUREN AVE. PARK



This revitalization attempts to generate sustainable growth on multiple scales. From the treatment of the contaminated soil, the reintroduction of the park's native species, to the integration of the park in a large network of green spaces, Sorauren Avenue Park embraces the treatment of site as an active and changing landscape. This park is reactive but self-maintained, and its appearance shifts as the previously paralyzed city park naturally evolves and comes back to life.

